

F E D E R I C O
D E L R O S S O
A R C H I T E C T S

CREATIVE COMMUNITIES

Realistic ways of creating innovative urban spaces

28-29 November 2019

“Real mission of an architect should be to create soulful spaces, with its own unique identity, maintaining a delicate balance between form, function, and spirit of a place, that I call the essence of architecture”

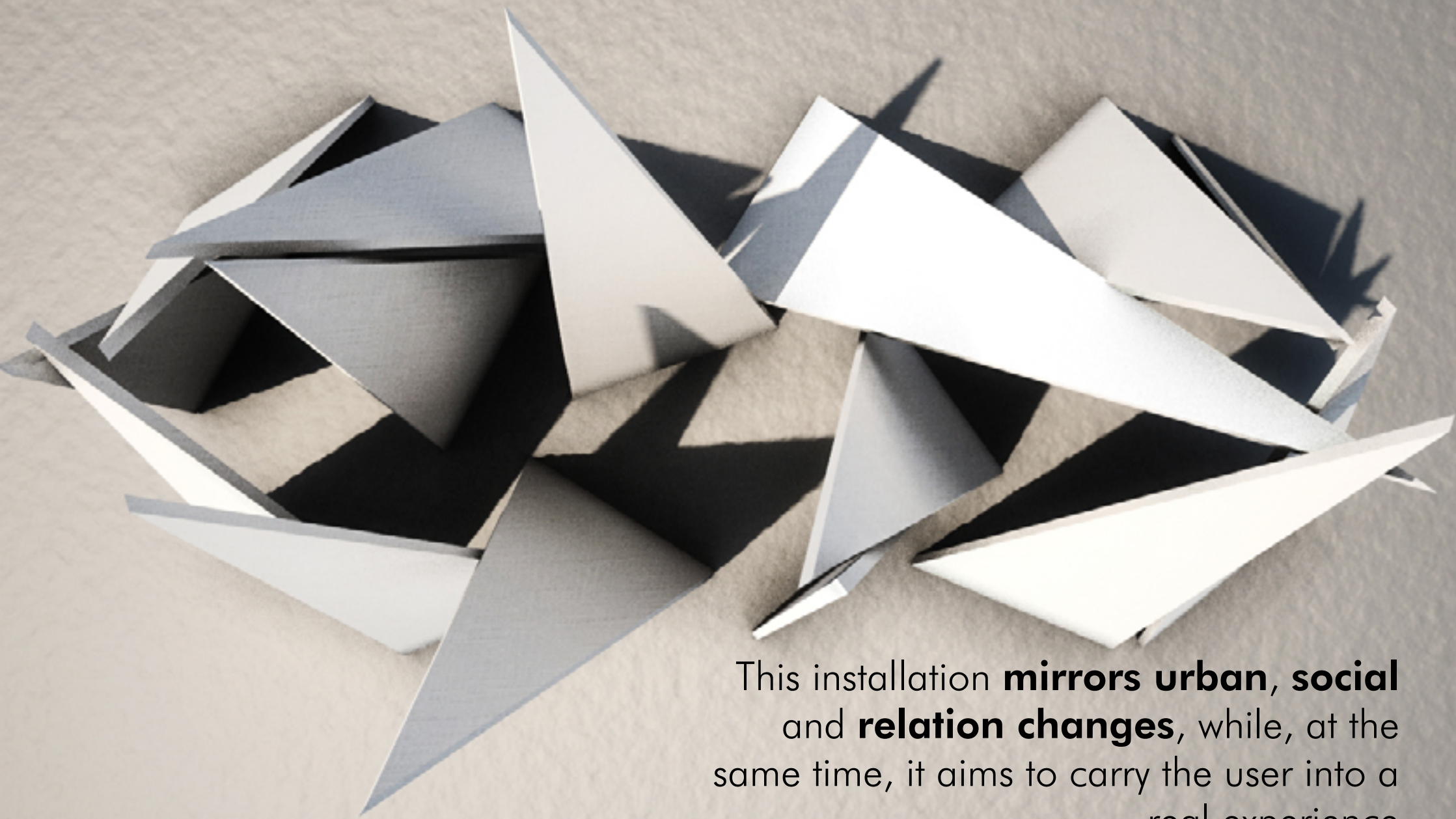
– FEDERICO DELROSSO

TEEPÉE

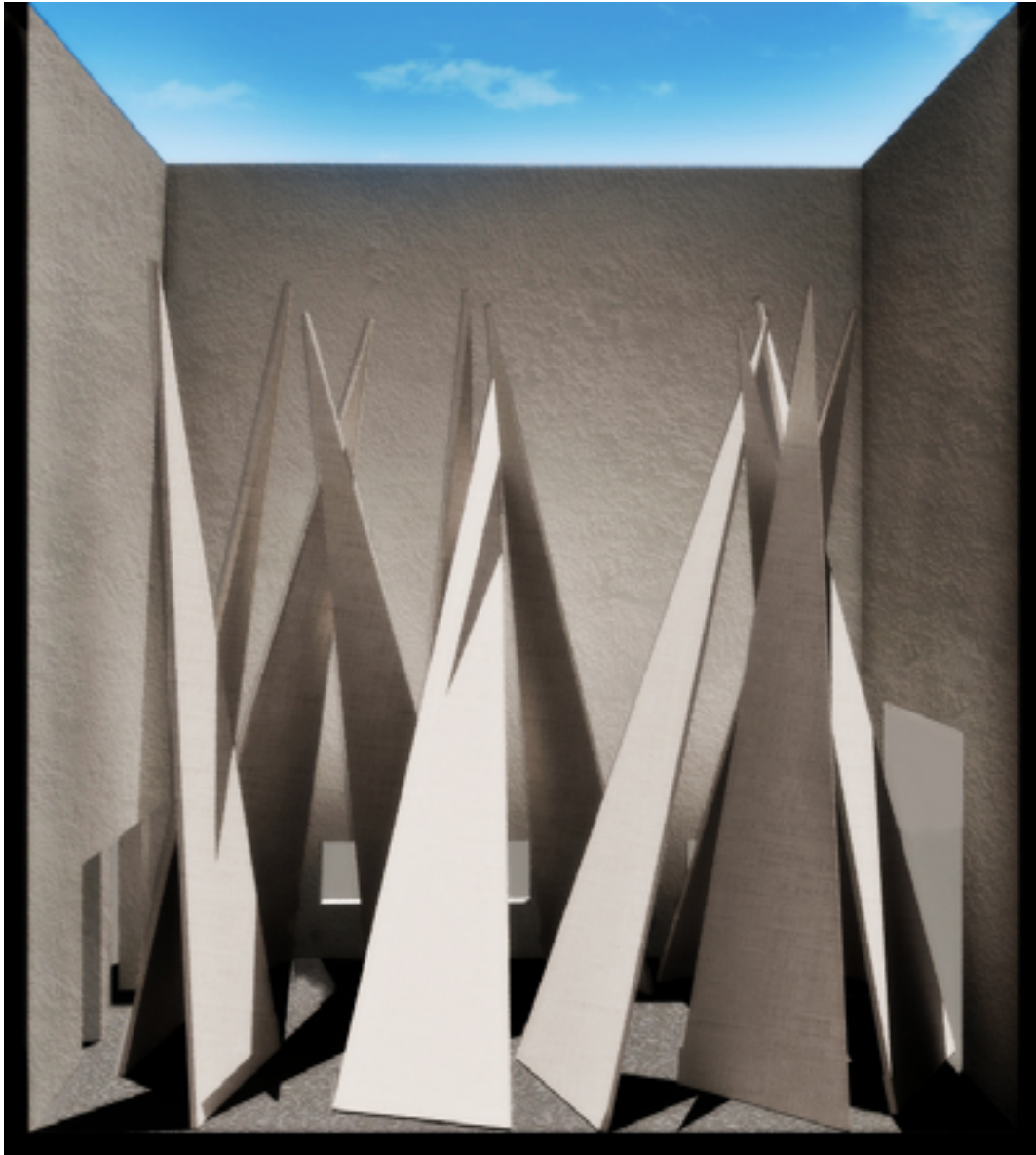
Going back to the origins of habitation,
Experiments and research through various interpretations of this ancient conical form



**'Teepee, traditional Native
American tent is my starting
point for the examination of
contemporary dwellings'
- Federico Delrosso**



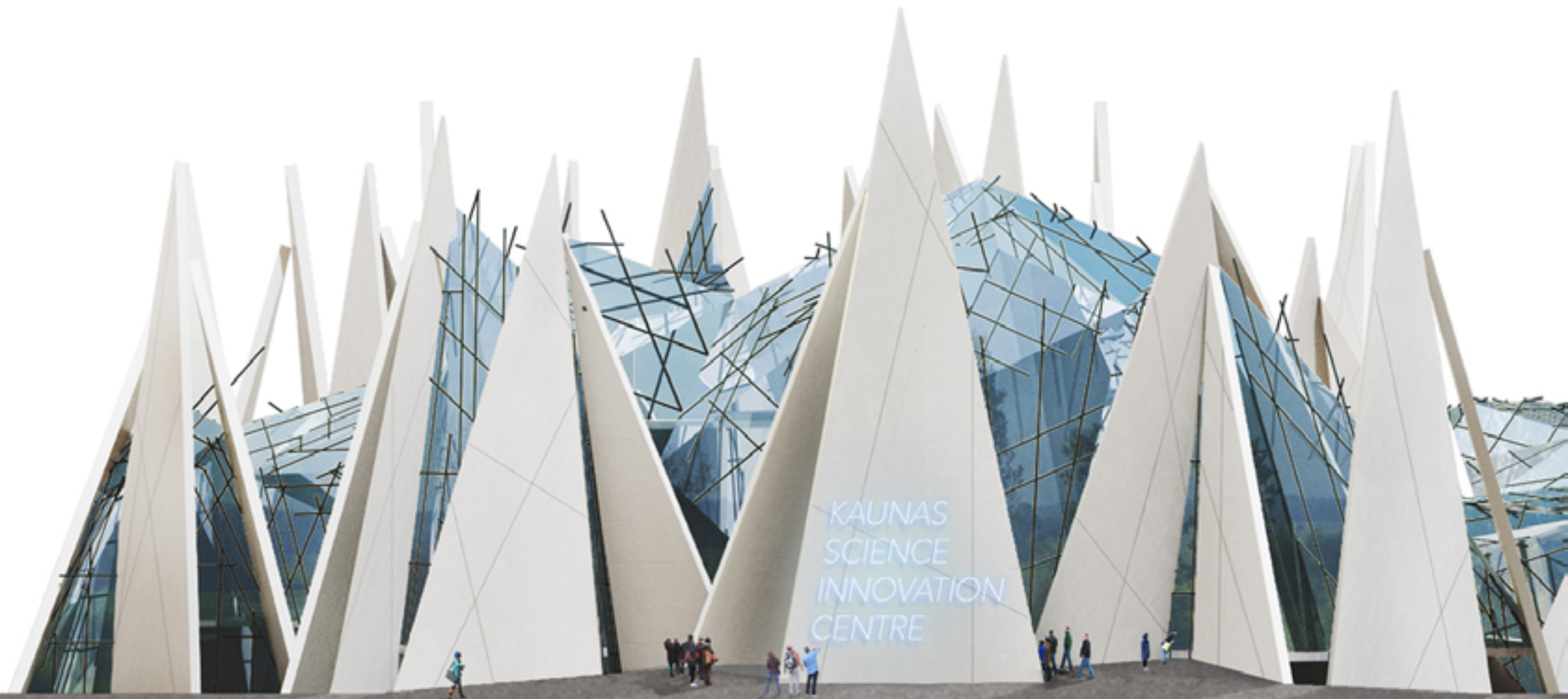
This installation **mirrors urban, social**
and **relation changes**, while, at the
same time, it aims to carry the user into a
real experience

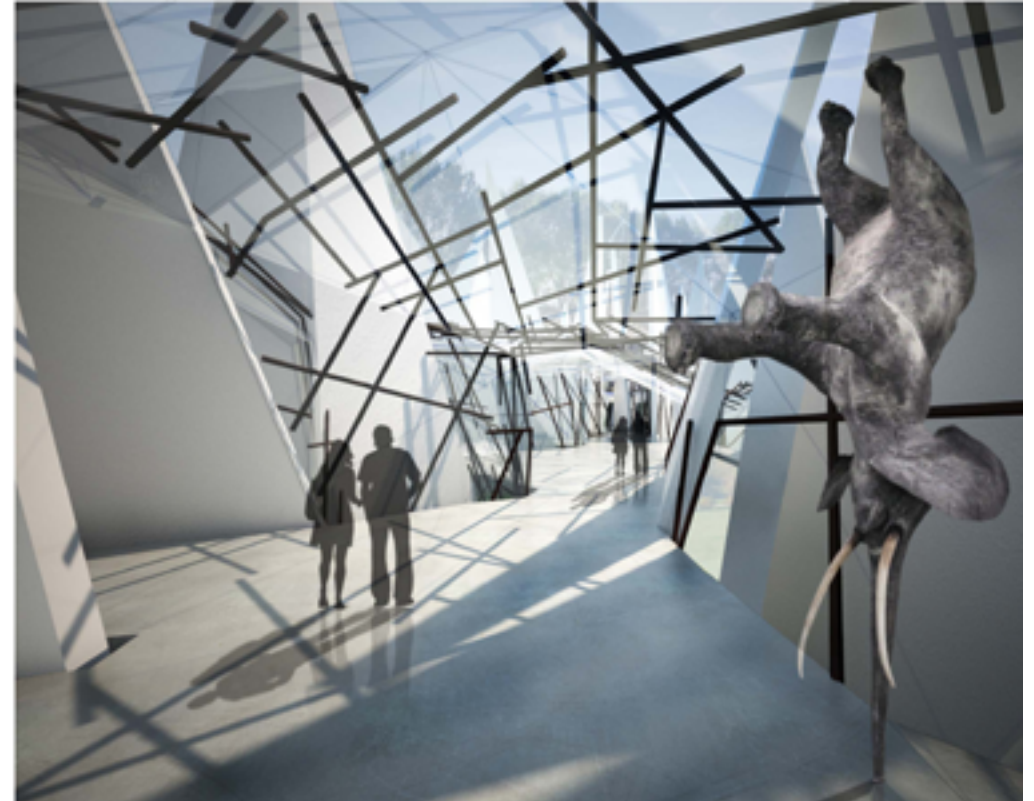


TEEPEE, an ancient symbol of the house carries the **primordial** notion of **shelter**, the first comfortable place of living that has transformed in time, compressing into **narrower urban** and **social spaces**



The **versatility, shape, form**, and **scale** of this celebrated conic ancient structure to create a **Modern and innovative architecture**





Strong, impactful and **flexible** form that can **transform** itself into various **personalized interpretations**

A new **urban fabric**, yet maintaining the **archetypal identity**; an architecture that **preserves distant memories** becoming a **spiritual and symbolic value** for the **entire humanity**





Simple yet complex, even if **revisited**, broken or fragmented, **Teepee** retains its **symbolic** and **spiritual** value of origin over the centuries, is to **conserve the essence** of its form in **future architectural** interventions

RESIDUAL SPACES

Re-stitching the wounded spots, generating a new point of view



“I think of those **areas generated** by the **transformation of the city**, sometimes too fast in relation to the **evolution of urban** centers that the **globalization** imposes, **growing vertically** but without enhancing the **connection spaces** within the existing **horizontal tissues**, resulting in somewhat **unfinished spaces**, nonplaces that I call **residual spaces**”

- Federico Delrosso

Case study: Milano Porta Nuova district



The old existing horizontal layers



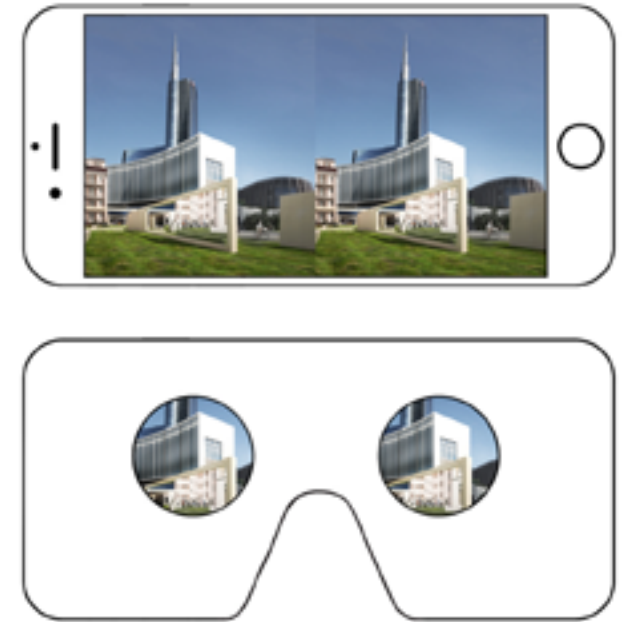
The new vertical layers



Residual spaces is a provocative research meant to create **connections** between the **wounded streets, spots, districts** with the urban pattern, **to intervene** between the **newly created zones** with the **old ones**

XXI Triennale International Exhibition
Design after Design

August 4 - September 12, 2016
Palazzo della Triennale di Milano



The project integrated with a **virtual reality experience**, leading the visitors to immerse themselves in the **new transformation**



Working on **residual spaces** can be a great opportunity to **rethink the future** of our **cities**, reconnecting the **urban pattern** to create new relations and **revive streets and districts**

**FEDERICO
DELROSSO**
ARCHITECTS

www.federicodelrosso.com
info@federicodelrosso.com

68 Corso Italia
Milano, MI 20122
+39 02 5680 8148

325 W45th St. Suite 214
New York, NY 10036
+12124448297

850 Ocean Dr. Suite 203
Miami beach FL 33139
+12124448297